

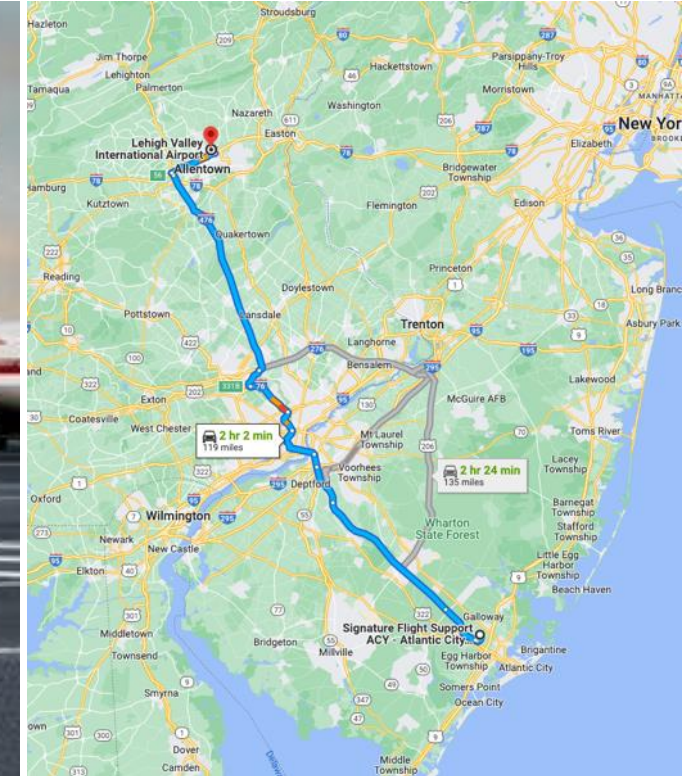
# REGIONAL AIR MOBILITY Opportunities & Challenges



*Ampaire*  
*Susan X. Ying*



# Your next American Airlines flight could be on a bus *CHEAP “FLIGHTS”?*



AA is partnering with ... to foster connections between the airline’s hub Atlantic City Airport to Lehigh Valley Airport, started in June

USA TODAY / 8 April, 2022



# REGIONAL AIR MOBILITY Opportunities & Challenges



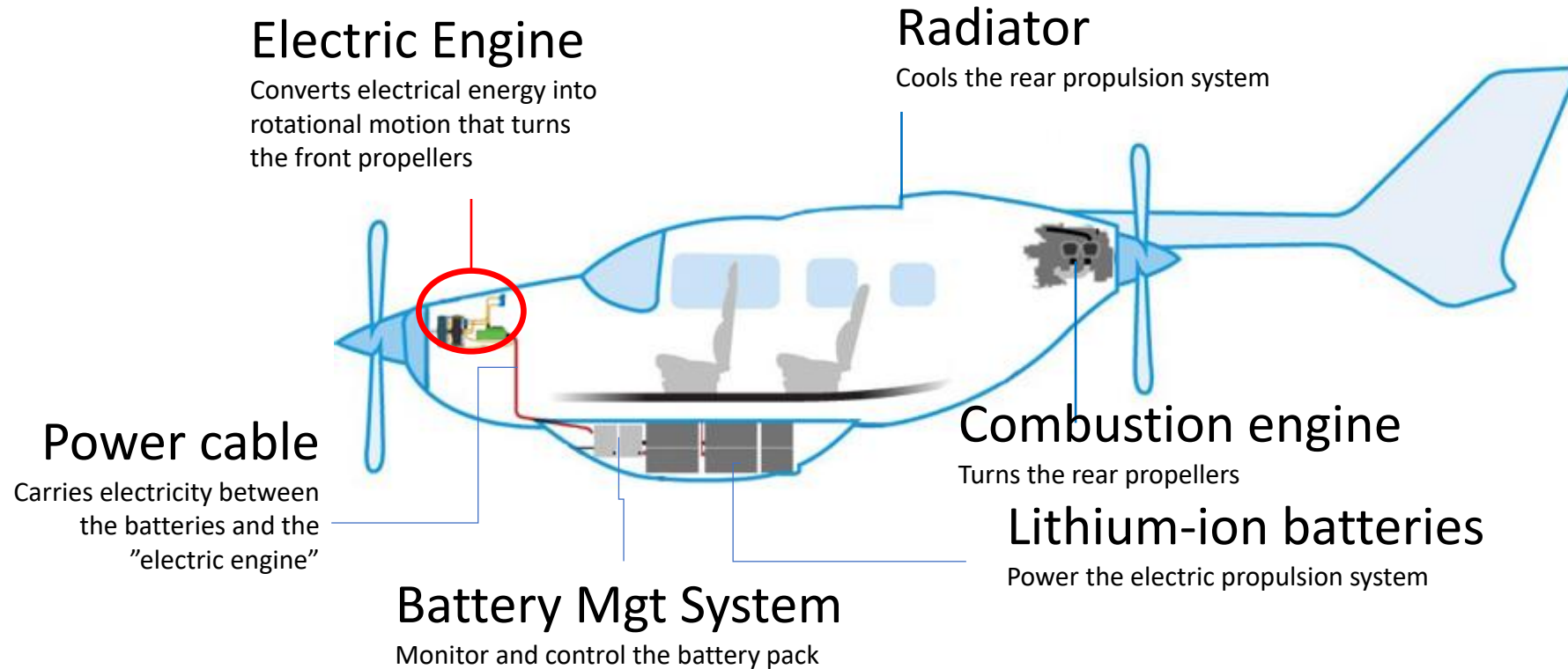
Aug 4, 2022, SFO

# N337EE Longest Hybrid-Electric Direct Flight Ever 1,135 Miles



- 7/20: CMA – MHV 85 miles
- 7/21: MHV – IGM
  - SAF
  - ULS
  - TQK
  - HYS 1,135 miles
- 7/22: HYS – CYM
  - DSM
  - IIB
  - OSH 660 miles
- 7/21: 100 gallons fuel used
- 1,880 miles total, 3 take-offs and landings on a single charge
- **40% fuel savings** and emissions reduction vs standard Skymaster

# Ampaire's Prototype Hybrid Flying Testbed 337EE



## Electric propulsion pioneers:

100% Dispatch Reliability To Date

Ampaire founded to pioneer electrified flight

2016

2018

Maiden flight of our hybrid-electric aircraft

2019

First hybrid-electric aircraft "market survey" flights in HI

2020

Hybrid-electric flights under "UK future flight" program

2021

Hybrid-electric aircraft testbed flights in CA

2022



UK Research and Innovation





# Ampaire's Launch Product: the Eco Caravan

## Hybrid Cessna Grand Caravan

### *Target Enter Into Service 2024*



- Provide a compelling value proposition
  - Minimize market adoption risk
  - Minimize infrastructure risks
  - Minimize regulatory risk

# Regional Air Mobility: Challenges

- Where can we charge the aircraft?
- How can we charge the aircraft?
- What Voltage?
- Adapters? Standards?
- Airport impact?







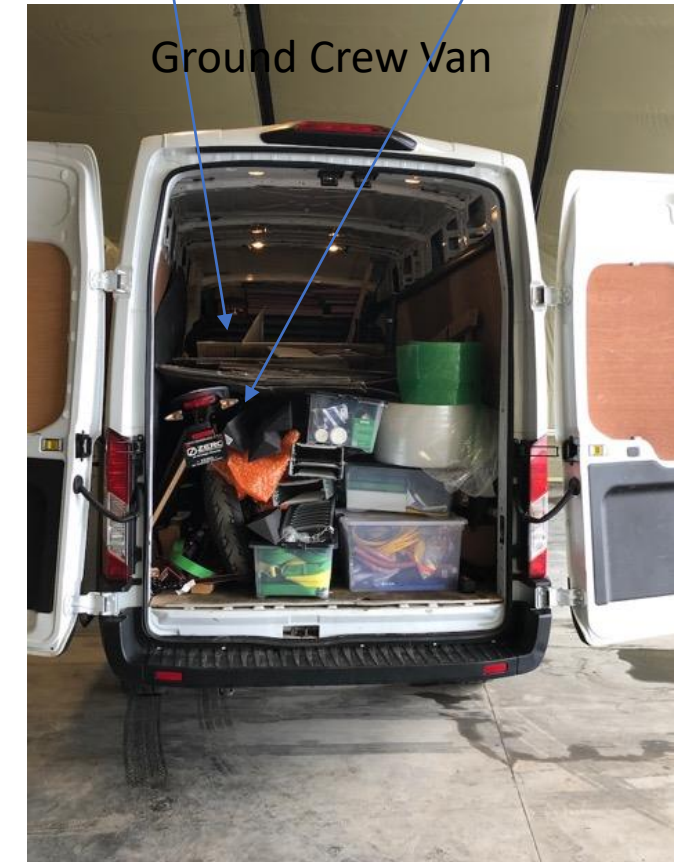
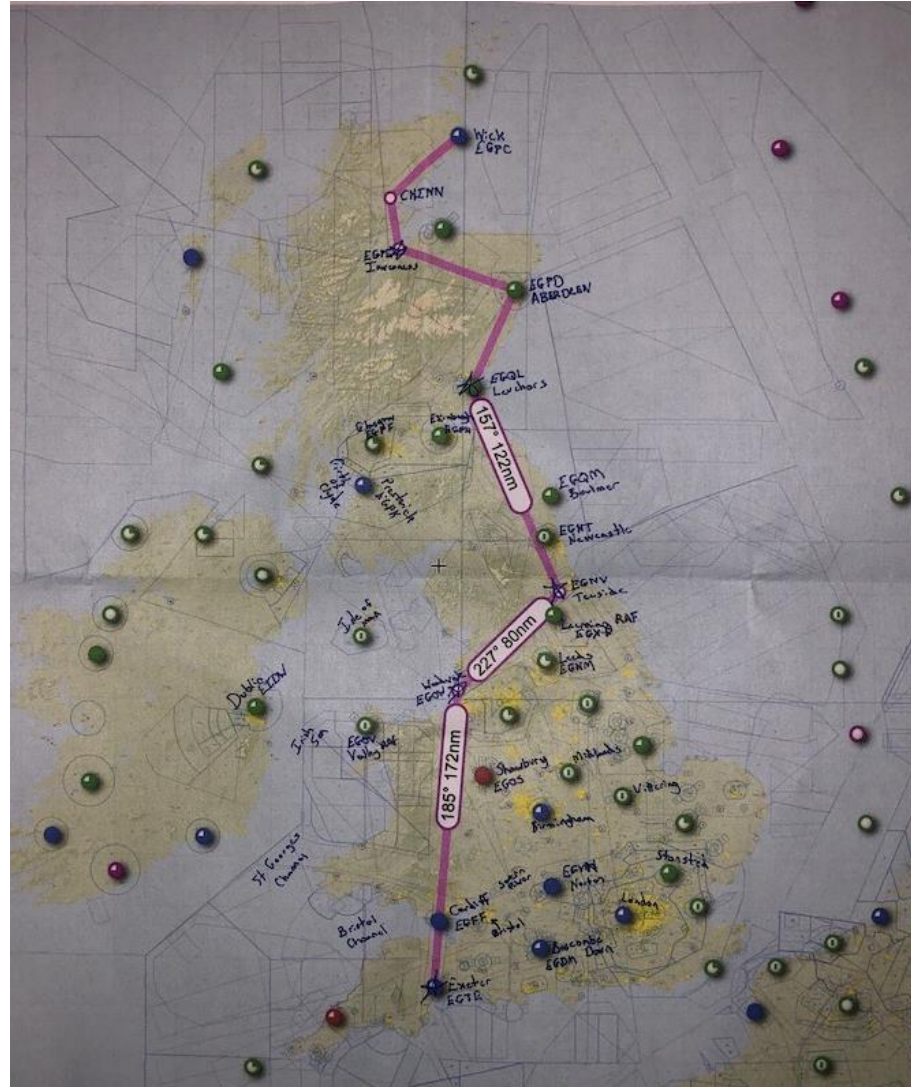
*THANK YOU*

*Ampaire.com*

*Susan X. Ying*



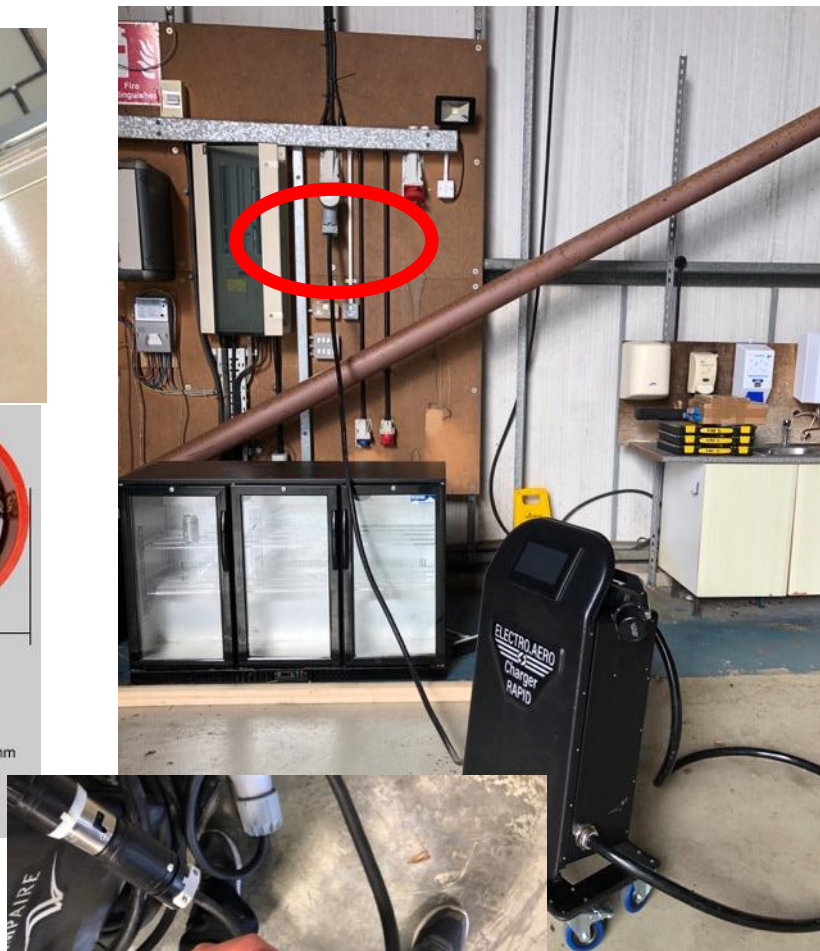
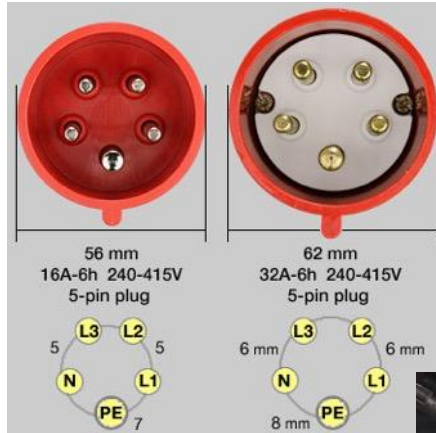
~~Longest~~ Non-stop Hybrid-Electric Flight from PSL to EXT: 418 nm



Ground Crew Van



# Regional Air Mobility: Challenges



Plugs directly into aircraft front cowling (SAE AS6968)

